

# ◆ Function setting / 功能設定

Status / 狀態	Symb./顯示符號	Description / 說明
<div> <div>Running status 運轉狀態</div> <div>Press <b>SET</b> &amp; <input checked="" type="checkbox"/> key 3 sec</div> <div>Setting of lock 鎖住設定</div> <div>Press <b>SET</b> key</div> <div>Selection of display 顯示選擇</div> <div>Press <b>SET</b> key</div> <div>Selection of input 輸入選擇</div> <div>Press <b>SET</b> key</div> <div>Selection of control method 控制方式選擇</div> <div>Press <b>SET</b> key 3 sec</div> <div>Selection of start method 起動方式選擇</div> <div>Press <b>SET</b> key</div> </div>	<div> <div>A</div> <div>0</div> <div>Lck</div> <div>2</div> <div>dSP</div> <div>A</div> <div>Int</div> <div>4-20</div> <div>Con</div> <div>PhAS</div> <div>Str</div> <div>Soft</div> </div>	<div> <div>1&gt; Running status / 運轉狀態</div> <div>2&gt; 「A」: Output volume / 輸出量; 「I」: Input volume / 輸入量 「n」: Manual output volume / 手動輸出量</div> <div>1&gt; 「Lck = 0」: All lock / 全鎖定</div> <div>2&gt; 「Lck = 1」: Data settable / 參數可設定</div> <div>3&gt; 「Lck = 2」: Unlock / 可設定</div> <div>1&gt; 「dSP = A」: Output volume / 輸出量</div> <div>2&gt; 「dSP = I」: Input volume / 輸入量</div> <div>3&gt; 「dSP = n」: Manual output volume / 手動輸出量</div> <div>「4-20」 = 【4 ~ 20mA】; 「0-20」 = 【0 ~ 20 mA】; 「1-05」 = 【1 ~ 5V】; 「2-10」 = 【2 ~ 10V】; 「0-5」 = 【0 ~ 5V】; 「0-10」 = 【0 ~ 10V】; 「ur」 = VR (10kΩ) / 可變電阻</div> <div>1&gt; 「Con = PhAS」: Phase control / 相位控制</div> <div>2&gt; 「Con = Ero」: Zero cross control / 零點控制</div> <div>1&gt; 「Str = Soft」 = Soft start / 緩衝起動</div> <div>2&gt; 「Str = kick」 = Kick start / 脈衝起動</div> </div>

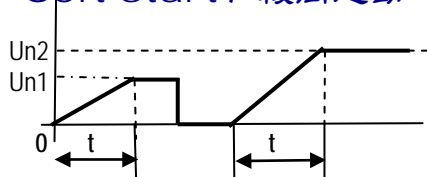
# ◆ Data setting / 參數設定

Status / 狀態	Symb / 顯示符號	Description / 說明
<div> <div>Volume of Output or input 輸出或輸入量顯示</div> <div>Press <b>SET</b> key 3 sec</div> <div>Setting of min output 最小輸出量設定</div> <div>Press <b>SET</b> key</div> <div>Setting of max. output 最大輸出量設定</div> <div>Press <b>SET</b> key</div> <div>Setting of soft start time 緩衝起動時間設定</div> <div>Press <b>SET</b> key</div> <div>Setting of alarm status 警報輸出狀態選擇</div> <div>Press <b>SET</b> key 3 sec</div> <div>Setting of Input offset 輸入偏差修正</div> <div>Press <b>SET</b> key</div> </div>	<div> <div>A</div> <div>0</div> <div>Out.L</div> <div>0</div> <div>Out.H</div> <div>100</div> <div>tnr</div> <div>10</div> <div>ALn</div> <div>no</div> <div>OFSt</div> <div>0</div> </div>	<div> <div>1&gt; Range : 0 ~ 100.0%</div> <div>2&gt; 「A」: Output volume / 輸出量 「E」: Input volume / 輸入量 「n」: Manual output volume / 手動輸出量</div> <div>1&gt; Range : 0 ~ 100</div> <div>2&gt; Min. output volume setting / 最小輸出量設定</div> <div>1&gt; Range : 0 ~ 199</div> <div>2&gt; Max. output volume setting / 最大輸出量設定</div> <div>1&gt; Range : 0 ~ 199 sec</div> <div>2&gt; Time of soft start / 緩衝起動時間</div> <div>1&gt; 「ALn = no」: Alarm output normal open (NO) / 警報輸出常開</div> <div>2&gt; 「ALn = nc」: Alarm output normal close (NC) / 警報輸出常閉</div> <div>1&gt; Range : - 99 ~ 99</div> <div>2&gt; Setting of Input offset / 輸入偏差修正</div> </div>

## ◆ Illumination of control method / 控制方式說明

Control method 控制方式		Phase angle control 相位控制	Zero cross control 零點控制
Output volume 輸出量	10 %		
	25 %		
	50 %		
	75 %		
Feature 特性		1. Suited to control the inductive load or The variable resistance load (IR, Pure metal heater, Silicone carbonate heater or Transformer) 2. The power factor $\cos \Theta < 1$ 3. Higher harmonic noise 1. 適於控制電感性或變阻性負載 (紅外線加熱器, 變壓器負載, 純金屬或碳粉發熱體) 2. 功率因數小於 1 3. 較高諧波干擾	1. Suited to control the constant resistance load or The capacity load. (Alloy heater or Capacitor) 2. The power factor $\cos \Theta = 1$ 3. Lower harmonic noise 1. 適於控制定阻性負載或電容性負載 (合金類發熱體或電容器負載) 2. 功率因數等於 1 3. 較低諧波干擾

## ◆ Soft start / 緩衝起動

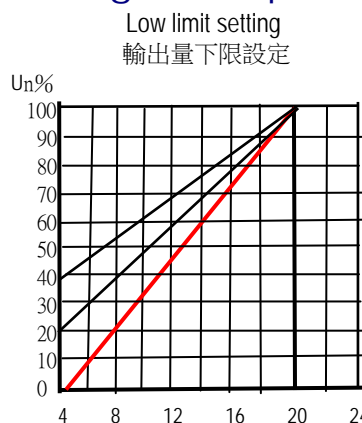


- 1 >  $Un$  or  $Un2$  : Output volume  
 2 >  $t$  : Soft start time (0 ~ 199 sec)

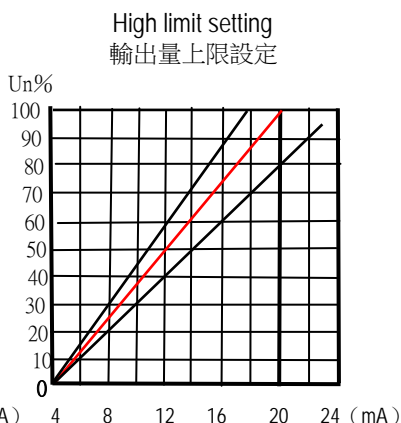
## ◆ Setting of manual output / 手動輸出設定

Manual output status 手動輸出狀態	Description 說明
<div style="border: 1px solid black; padding: 5px; display: inline-block;">n.000</div>	1. On the manual output status, Press  or  key to change the manual output volume 2. Press <b>SET</b> to finish setting 1. 在手動輸出狀態中, 按或鍵可改變手動輸出量。 2. 按 <b>SET</b> 鍵完成手動輸出量設定。

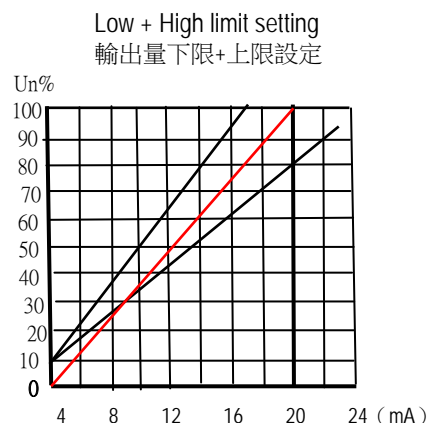
## ◆ Setting of output limit / 輸出量限制設定



- 1 > A : Low limit = 0 ; High limit = 100  
 2 > B : Low limit = 20 ; High limit = 100  
 3 > C : Low limit = 40 ; High limit = 100



- 1 > A : Low limit = 0 ; High limit = 100  
 2 > B : Low limit = 0 ; High limit = 80  
 3 > C : Low limit = 40 ; High limit = 120



- 1 > A : Low limit = 0 ; High limit = 100  
 2 > B : Low limit = 10 ; High limit = 80  
 3 > C : Low limit = 10 ; High limit = 120

Note :

- 1 > 「 $Un$ 」: Output volume / 輸出量  
 2 > Setting range : Low limit = 0 ~ 100% , High limit = 0 ~ 199% / 設定範圍: 下限設定 = 0 ~ 100% , 上限設定 = 0 ~ 199%  
 3 > Low + high limit setting is suited to control the radial heating heater such as IR lamp.  
 輸出量下限+上限設定適用於高輻射熱加熱器如紅外線加熱器。

陽明電機股份有限公司  
**FOTEK CONTROLS CO., LTD.**

Copy right ©FOTEK CONTROLS CO., LTD.  
 Specification may be modified without notice in advance  
 規格變更恕不事先通知 2021/4/24 修訂